

Stereo-microscope Olympus SZX12

Technical Data

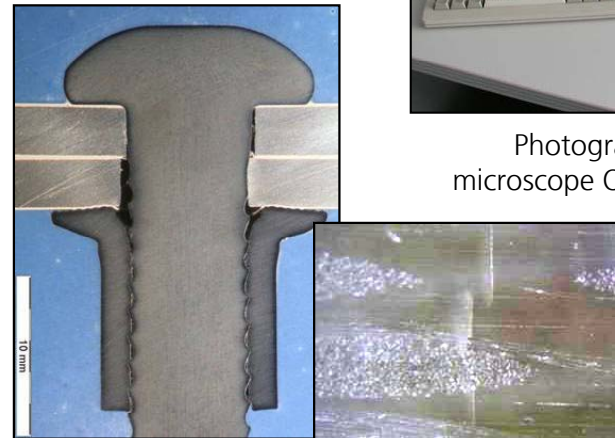
- Incident light stereomicroscope for examinations of macro-polished sections and small material samples
- Enlargement up to 120 times
- High-resolving images in all commercial graphic formats
- Control and evaluation on-line via desktop PC
- Controllable cold light source KL 1500 with flexible lighting conductors
- Post-treatment and measuring of the images produced by means of specific software Olympus DP-Soft

Employment Area/Application

- Detail photographs of macro polishes and material samples
- Examination of the surface state of material samples
- Detection and evaluation of micro fissure and other material damages
- Measuring geometric quantities of mechanically/thermally/adhesively joined connection samples



Photograph and detailed examination with stereo-microscope Olympus SZX12 of macro-polished sections



Macro-polished section of a retaining ring bolt connection in coated sheet steel (left); micro-fissures in FGC basic material after fatigue-life tests (right)



Universität Rostock
Fakultät für Maschinenbau und Schiffstechnik
Lehrstuhl Fertigungstechnik



Fraunhofer
Anwendungszentrum
Großstrukturen in der
Produktionstechnik