

Photogrammetry system IMETRIC 610 PC

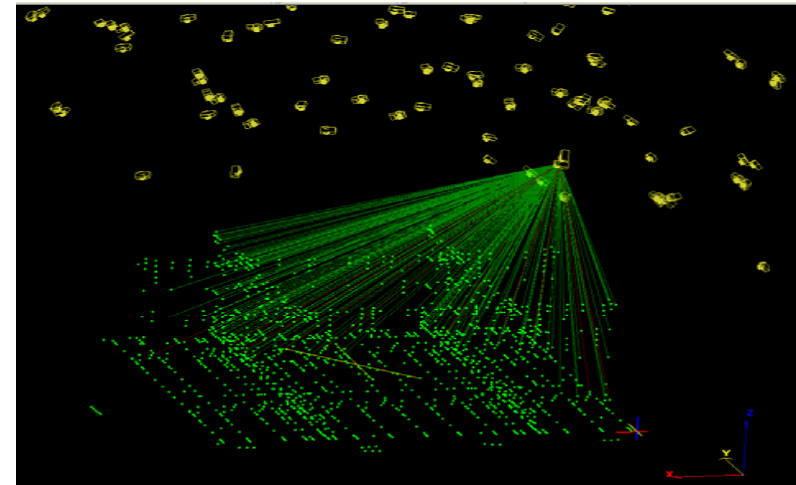
Technical data:

- Resolution: 3060 x 2036 (about 6.3 mega pixel)
- Measuring range: up to about 30m x 30m x 30m
- Measuring accuracy: 1: 100,000 with regard to the object volume; i.e. 0.020 mm at 2,000 mm³
- Mains or storage battery operation
- User interface: PC with Windows 2000



Operation area/application

- Deformation analyses in ship construction
- Measuring the shaft alignment (ship propulsion)
- Evenness measuring of large engineering components (e.g. crane pillar flanges)
- Calibration of industrial robots
- Measuring appliances in automobile construction
- Measurement for crane test analyses



Application example:weld deformation analysis in section construction



Universität Rostock
Fakultät für Maschinenbau und Schiffstechnik
Lehrstuhl Fertigungstechnik



Fraunhofer
Anwendungszentrum
Großstrukturen in der
Produktionstechnik